

#brumbreathes

# Air Pollution Facts

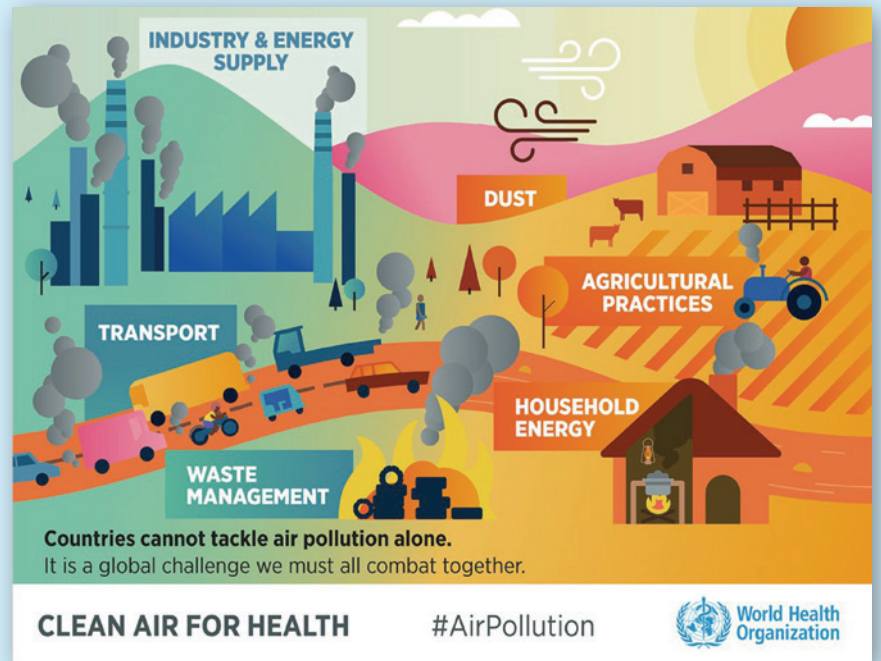
Pollution in Birmingham has led to poor air quality.

## Where does pollution come from?

Our air can become polluted from many different sources. The main source of air pollution in Birmingham is motorised transport i.e. cars, buses, taxis, vans and lorries.

Other sources include...

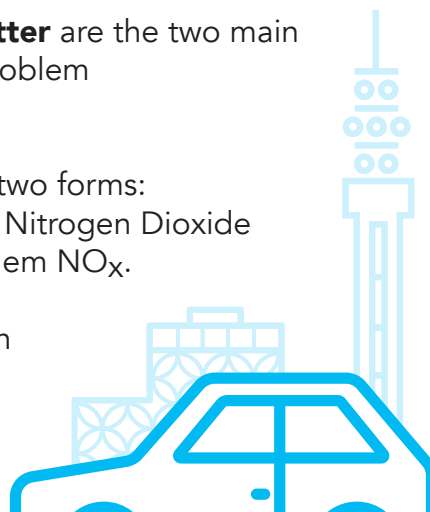
- Industry
- Agriculture
- Heating and Fires



**NO<sub>x</sub>** and **Particulate Matter** are the two main air pollutants that are a problem in Birmingham.

NO<sub>x</sub> is a gas. It comes in two forms: Nitrogen Oxide (NO) and Nitrogen Dioxide (NO<sub>2</sub>). Together we call them NO<sub>x</sub>.

NO<sub>x</sub> amounts are illegal in some locations in Birmingham.



Transport accounts for around

**80%**

of **NO<sub>x</sub>** emissions.

**Particulate Matter (PM)** is made up of tiny bits of liquid or solids.

We talk about PM<sub>10</sub>, PM<sub>2.5</sub> and PM<sub>0.1</sub>. The numbers after PM tell us how small the particles are.

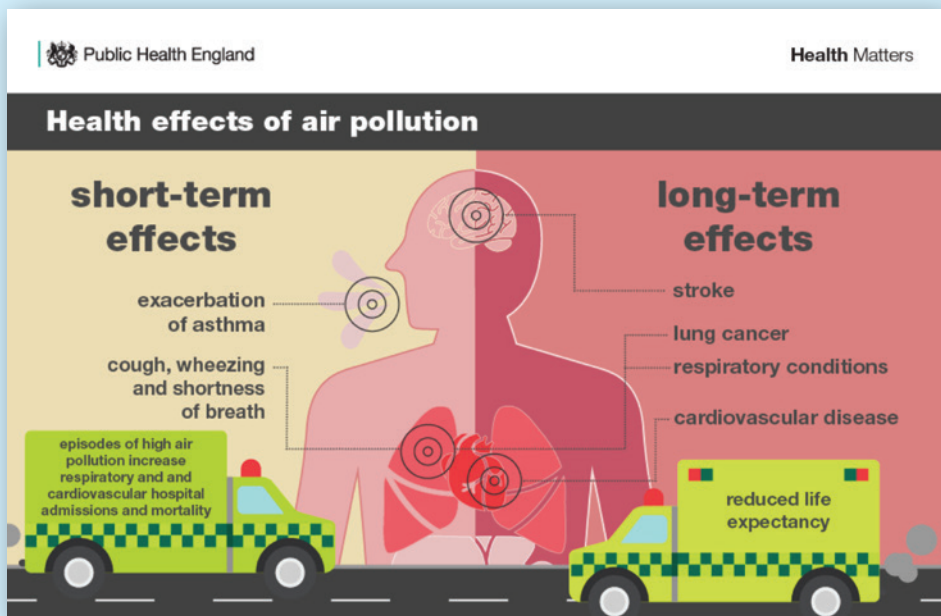
The smaller the particles the more damaging they are to our health because they can get deeper into our lungs. Some particles are so small they can pass straight into our blood stream.

**This is dangerous.**

There is no safe level for **PMs**.



## Health Impacts of Air Pollution



Up to  
**900**  
deaths  
per year in  
Birmingham are  
linked to man-made  
air pollution!

## What can you do?

Become a **Clean Air Champion** with Sustrans

email [brumbreathes@sustrans.org.uk](mailto:brumbreathes@sustrans.org.uk) for more information

**Sustrans is the charity making it easier for people to walk and cycle.**

We connect people and places, create liveable neighbourhoods, transform the school run and deliver a happier, healthier commute. **Join us on our journey.**

 @sustranswestmidlands

 @SustransWMids

**#brumbreathes**

Registered Charity No. 326550 (England and Wales) SC039263 (Scotland).

  
**sustrans**  
JOIN THE MOVEMENT

 **Birmingham**  
City Council