

Footways



People tend to cut across open space if the path isn't direct enough. You will often find muddy tracks where this has become normal behaviour. These muddy tracks show the desire lines.

Putting a better surface on these routes can help to make a journey quicker and more appealing.

Street Action
Street TRUMPS

Walk/Cycle Friendly	8
Car Friendly	8
Effectiveness	9
Ease of Implementation	4
Attractiveness	5
Cost (£)	££

Positive Parking



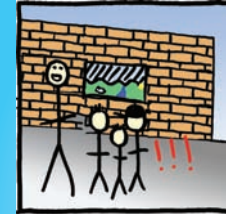
Letting people know where they can park, known as 'Positive Parking', can allow space on a street to be used more efficiently.

Coloured surfacing can be used to show the best places to park.

Street Action
Street TRUMPS

Walk/Cycle Friendly	6
Car Friendly	8
Effectiveness	7
Ease of Implementation	5
Attractiveness	5
Cost (£)	£££

Artwork



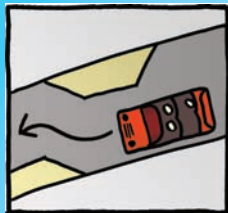
Artwork is a great way of saying this street is different, "this street is different, the street has meaning to local people".

Art can also be used to get lots of people of all ages to take an interest and pride in the street, especially if it has been designed by them and reflects what they feel.

Street Action
Street TRUMPS

Walk/Cycle Friendly	8
Car Friendly	8
Effectiveness	6
Ease of Implementation	8
Attractiveness	9
Cost (£)	£

Chicanes



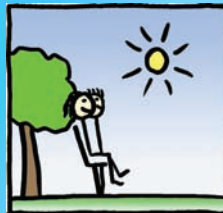
Chicanes are features that create bends in the road to slow down traffic.

Chicanes are often just tarmac and kerbs, but can also be made up by placing other obstacles in the road, e.g. planters, trees or artwork, or even marked parking spaces.

Street Action
Street TRUMPS

Walk/Cycle Friendly	4
Car Friendly	7
Effectiveness	8
Ease of Implementation	4
Attractiveness	4
Cost (£)	£££££

Benches & Seating



Some people are not keen on benches or seating because of concerns over antisocial behaviour. However, if placed well benches can make streets feel safer by encouraging more people and 'eyes' onto the street.

Benches are really useful if you want to provide places for people to stop and rest.

Street Action
Street TRUMPS

Walk/Cycle Friendly	8
Car Friendly	8
Effectiveness	7
Ease of Implementation	9
Attractiveness	9
Cost (£)	££

Shared Space



These are areas where pedestrians, cyclists and vehicles have equal priority. Shared spaces are typically found in pedestrianised shopping streets but can work well in residential areas.

Removing the separation between pavement and road can create an area where all road users have to be respectful of each other.

Street Action
Street TRUMPS

Walk/Cycle Friendly	7
Car Friendly	7
Effectiveness	6
Ease of Implementation	5
Attractiveness	6
Cost (£)	££££££



Street Action
Street TRUMPS

Street Action
Street TRUMPS

Street Action
Street TRUMPS



Street Action
Street TRUMPS

Street Action
Street TRUMPS

Street Action
Street TRUMPS



Street Action
Street TRUMPS

sustrans
JOIN THE MOVEMENT

Paint & Thermoplastics



Great for adding colour to a street, to make it feel different, or give more priority to parts where people play or cross the road.

Making a street feel different can have a calming effect on vehicle speeds. Markings can also be removed to slow traffic by creating uncertainty. Thermoplastics are melted onto the road surface and can be used like paint, including more detailed patterns and colouring.

Street Action
Street TRUMPS

Walk/Cycle Friendly	7
Car Friendly	8
Effectiveness	6
Ease of Implementation	7
Attractiveness	9
Cost (£)	£

Gateway Features



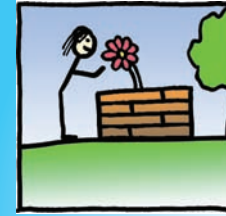
These are objects or signs placed at the start or end of a street or neighbourhood to say "this area is different and needs to be respected".

Features can range from trees, planters, seating and high-quality surfaces, through to artwork that local people feel represents the area.

Street Action
Street TRUMPS

Walk/Cycle Friendly	7
Car Friendly	8
Effectiveness	7
Ease of Implementation	4
Attractiveness	6
Cost (£)	£££

Planters and Trees



These can be used to add colour and naturalness to a street and a sense of local 'ownership'. They can be used to make a street more interesting by breaking up larger spaces.

Planters can also be used to calm traffic if used on or near the road by reducing how far ahead drivers can see, or as an obstacle to drive around.

Street Action
Street TRUMPS

Walk/Cycle Friendly	8
Car Friendly	7
Effectiveness	8
Ease of Implementation	8
Attractiveness	9
Cost (£)	£££

Build Outs



These are simply things that jut out into the street. Build outs are often used to make safe crossing spaces by creating a space between parked cars where people, particularly children, see what's happening before they cross.

Build outs normally have bollards on them to prevent cars parking on them.

Street Action
Street TRUMPS

Walk/Cycle Friendly	6
Car Friendly	7
Effectiveness	7
Ease of Implementation	4
Attractiveness	3
Cost (£)	££££

Raised Tables



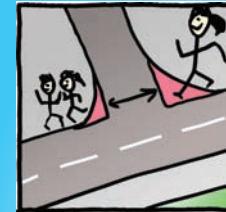
Here the road is brought up to the same level as the pavement for the length of a car. They are useful if you want to link two sides of the road so that pedestrians, cyclists and people with buggies or in wheelchairs do not have to go up and down kerbs to cross.

Raised tables also make people more visible to drivers when crossing, and are effective at slowing vehicles.

Street Action
Street TRUMPS

Walk/Cycle Friendly	7
Car Friendly	8
Effectiveness	6
Ease of Implementation	3
Attractiveness	2
Cost (£)	£££££

Corner Radii



This refers to the curve of the road at a junction between streets. The more generous the curve or radii, the easier it is for cars to come into or exit a street at speed.

If you reduce the corner radii, cars are usually forced to slow down.

Street Action
Street TRUMPS

Walk/Cycle Friendly	8
Car Friendly	5
Effectiveness	6
Ease of Implementation	5
Attractiveness	5
Cost (£)	££££



Street Action
Street TRUMPS

Street Action
Street TRUMPS

Street Action
Street TRUMPS



Street Action
Street TRUMPS

Street Action
Street TRUMPS

Street Action
Street TRUMPS



Street Action
Street TRUMPS

sustrans
JOIN THE MOVEMENT