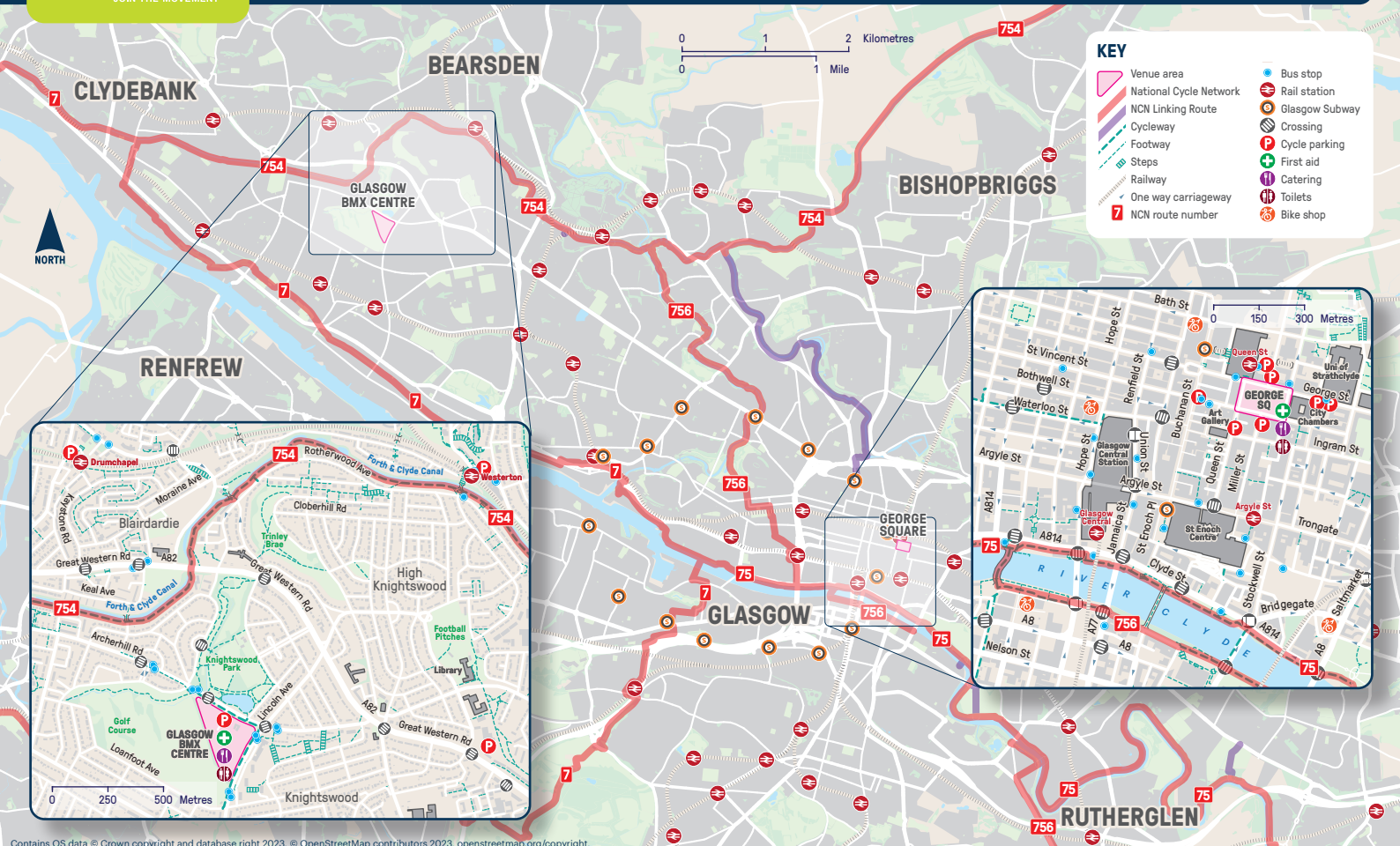


2023 UCI CYCLING WORLD CHAMPIONSHIPS: BMX RACING 6-13 August and ROAD RACES FINISH 5-13 August



KEY

Venue area	Bus stop
National Cycle Network	Rail station
NCN Linking Route	Glasgow Subway
Cycleway	Crossing
Footway	Cycle parking
Steps	First aid
Railway	Catering
One way carriageway	Toilets
NCN route number	Bike shop

GLASGOW BMX CENTRE

Inset map showing the Glasgow BMX Centre area in detail. The venue is located near the Forth & Clyde Canal. Surrounding streets include Rotherwood Ave, Cloberhill Rd, Great Western Rd, Archershill Rd, and Loanfoot Ave. Landmarks such as Knightswood Park, Football Pitches, and a Golf Course are also shown. The map includes a scale bar from 0 to 500 metres and a north arrow.

GEORGE SQUARE

Inset map showing the George Square area in detail. The venue is located near the River Clyde. Surrounding streets include St Vincent St, Bothwell St, Waterloo St, Argyle St, and St Enoch Pl. Landmarks such as Glasgow Central Station, Glasgow Central, and the University of Strathclyde are also shown. The map includes a scale bar from 0 to 300 metres and a north arrow.

HOW TO REACH THE VENUES

GLASGOW BMX CENTRE and GEORGE SQUARE

The Glasgow BMX Centre is located adjacent to NCN 754 and close to NCN 7, in the north west of the city. It is also just a short walk from the railway stations of Westerton (to the north) and Garscadden (to the south) with regular services from Glasgow Central Station.

Historic George Square - Glasgow's principal civic square - hosts the road races finish line. Situated directly in front of Glasgow Queen Street railway station, the venue is easily accessible. If arriving by bicycle, both NCN 75 and NCN 756 lie a short distance to the south of George Square.

APPROXIMATE DISTANCES AND TRAVEL TIMES FROM QUEEN STREET STATION

BMX CENTRE:	6.6 miles (10.6 km)	by bicycle: 45 mins on foot: 1 hr 30 mins
ROAD RACES FINISH GEORGE SQUARE:	Adjacent to station	by bicycle: 1 min on foot: 2 mins

ADDITIONAL INFORMATION

Make the most of your experience and plan your visit to Glasgow. For more information, please visit:

www.peoplemakeglasgow.com

For more information about the event, including race schedules and ticket purchase, please go to:

www.cyclingworldchamps.com



Photo: © Dan Istiene

FRIENDLY STOPS

OFF THE RAILS CAFÉ, G1 2AH	0141 332 4277
BILLY BILSLAND CYCLES (bike repair), G1 5LA	0141 552 0841
PHILIP LANG CYCLES (bike repair), G1 5ED	0141 552 5103
GALLUS PEDAL (guided bike tours), G3 8AZ	07496 225194
OVO BIKES by NEXTBIKES (bike hire)	www.nextbike.co.uk/en/glasgow

Get free rentals on OVO Bikes and ride like the pros for the UCI events in Glasgow. The first 20 minutes of every rental on OVO pedal and e-bikes from August 3rd - 13th will automatically be **free**, no voucher needed. Riders simply need to download the **nextbike** by **TIER** app, successfully activate an account, and then rent an OVO Bike in this time period to start riding for free. If a rental goes over 20 minutes, it will begin charging at the standard rate. OVO Bikes must be returned to official stations to avoid a service charge. You can easily find these in your **nextbike** by **TIER** app.