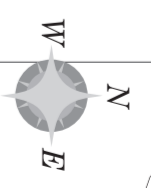
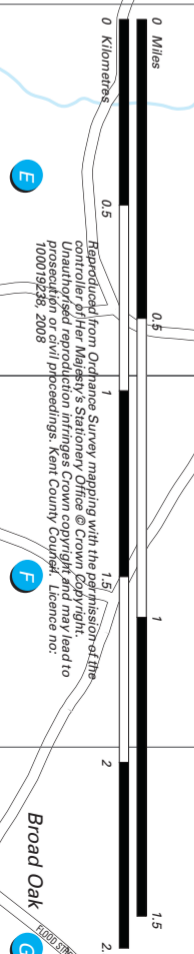
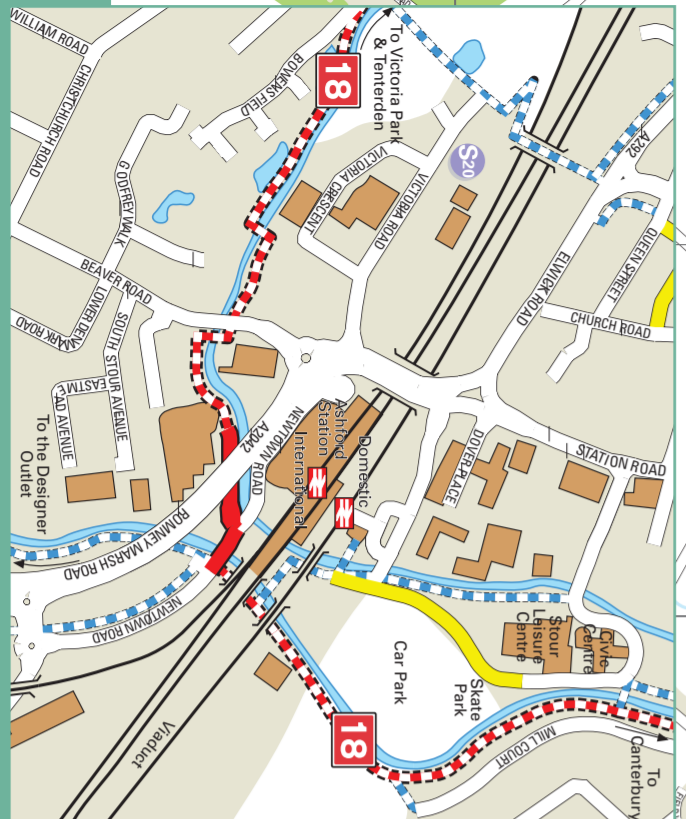
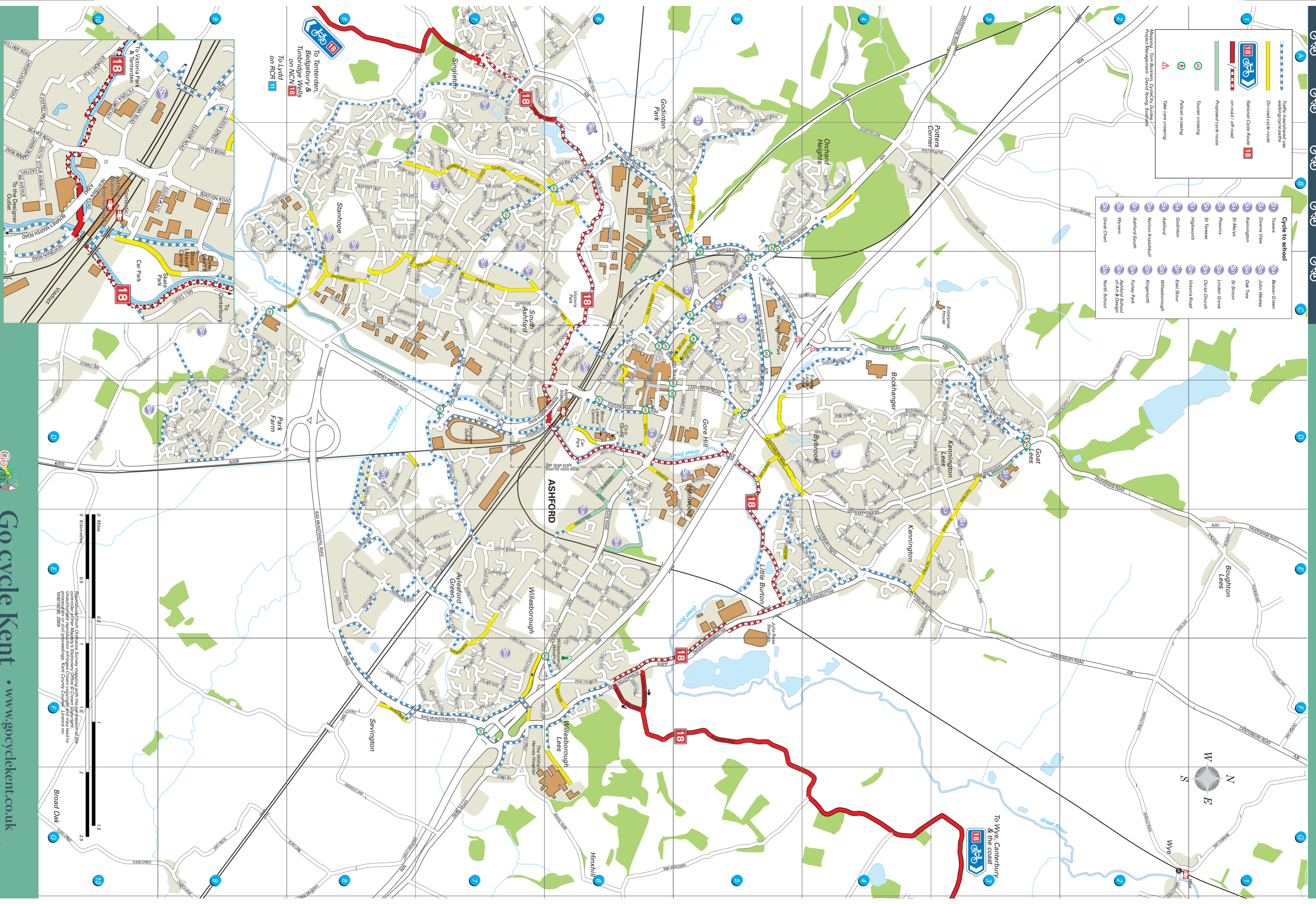


Traffic lights/red are waiting/cycle paths

- On-road cycle route
- National Cycle Route 18
- on-road / off-road
- Proposed cycle route
- Townsm crossing
- Pedestrian crossing
- Take care crossing

- Cycle to school**
- | | | | |
|-----|-------------------|-----|--------------------------------|
| S1 | Towns | S14 | Bower Green |
| S2 | Downs View | S15 | John Masley |
| S3 | Kennington | S16 | Old Tree |
| S4 | St Marys | S17 | St Simon |
| S5 | Phoenix | S18 | Lunden Grove |
| S6 | St Theresa | S19 | Christ Church |
| S7 | Highworth | S20 | Victoria Road |
| S8 | Godinton | S21 | East Stour |
| S9 | Ashford | S22 | Willesborough |
| S10 | Norton Knatchbull | S23 | Kingsnorth |
| S11 | Ashford South | S24 | Furley Park |
| S12 | Wyvern | S25 | Ashford School of Art & Design |
| S13 | Great Chart | S26 | North School |



STATION AREA INSET

Go cycle Kent
Further information: www.gocyclekent.co.uk
www.kent.gov.uk/explorekent
www.sustrans.org.uk