

Hands Up Scotland Survey 2022: Overview

An Official Statistics Publication for Scotland – May 2023

The annual Hands Up Scotland Survey, now in its fifteenth year, is published by Sustrans. The survey is funded by Transport Scotland and is designed to provide reliable and up to date information on mode of travel to school in Scotland.

The question posed to all school pupils and nursery children is, 'How do you normally travel to school?' with a choice of travel modes.

The travel modes are categorised as follows:

- **Active travel:** walking, cycling and scootering or skating
- **Public sustainable travel:** bus
- **Multi-mode travel:** park and stride (driven part of the way by car and walk the rest)
- **Private motorised travel:** driven (car) and taxi.

Over three-quarters (79.3%) of all state schools in Scotland (excluding nurseries) took part in the 2022 survey. Responses were received from over 456,000 school pupils and over 40,000 nursery children.

A full report detailing the national level findings and greater technical detail on the data collection is also available. This overview is an accompaniment to that report.

Key findings

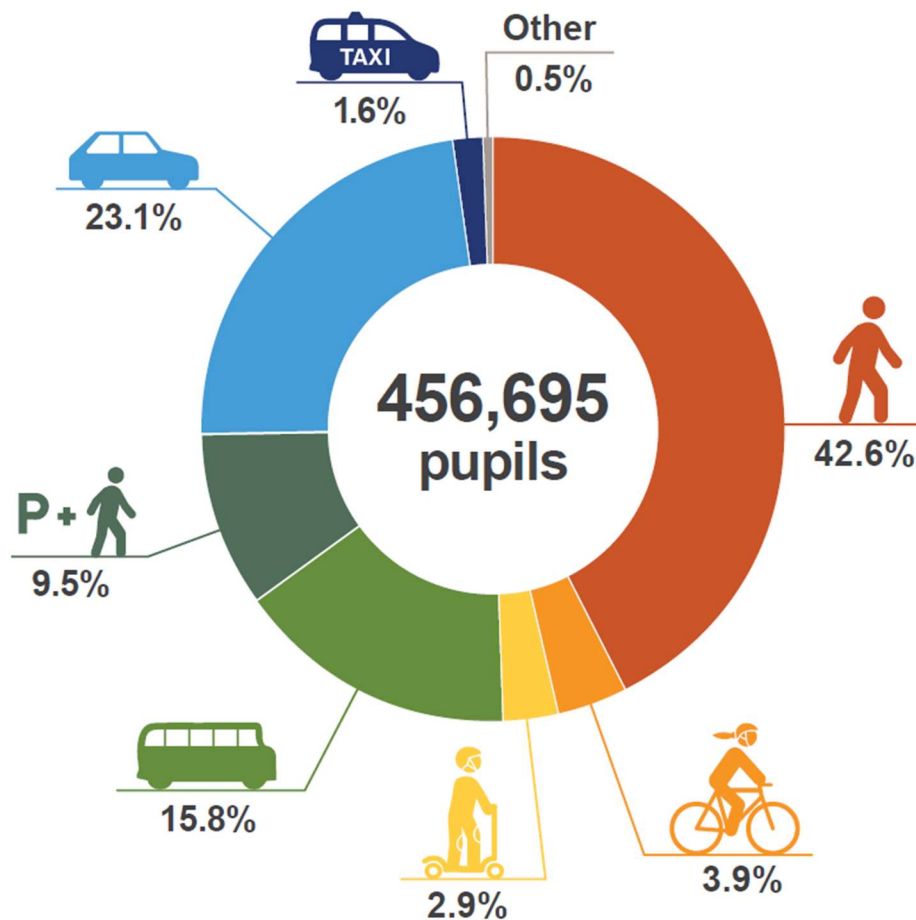
Active travel to school has declined since 2021, but remains higher than the pre-pandemic levels of 2019.

The key findings from the 2022 survey are:

- In 2022, the percentage of school pupils travelling actively to school, either by walking, cycling, scootering or skating, is at 49.4%. This represents a continued decrease since a 51.2% high in 2020, but is still higher than the pre-pandemic levels of 2019 (47.8%)
- Walking rates decreased by a percentage point (pp) but walking is still by far the most common way school pupils get to school
- Cycling is at its third highest level of the past ten survey years at 3.9%, 0.1pp lower than the previous year
- The percentage of pupils scootering or skating to school has increased to a joint recorded high of 2.9%
- Bus use has increased by 1.3pp since 2021, to 15.8%, and is now comparable to pre-pandemic levels, though is still 3pp lower than in 2013
- The proportion of pupils being driven to school saw a 0.1pp drop since 2021, to 23.1%. This is the third highest level of the past ten survey years.

National results 2022

Chart 1: National travel modes: proportion of participating pupils travelling by different modes (all school pupil responses exc. nursery children), 2022.¹



Active travel

49.4% (225,831 out of 456,695) of school pupils (state and independent schools combined) said they normally travel to school in an active way, with walking as the most common mode of travel to school.

Public sustainable travel

15.8% of school pupils (72,102) said they normally travel to school by bus.

Multi-mode travel

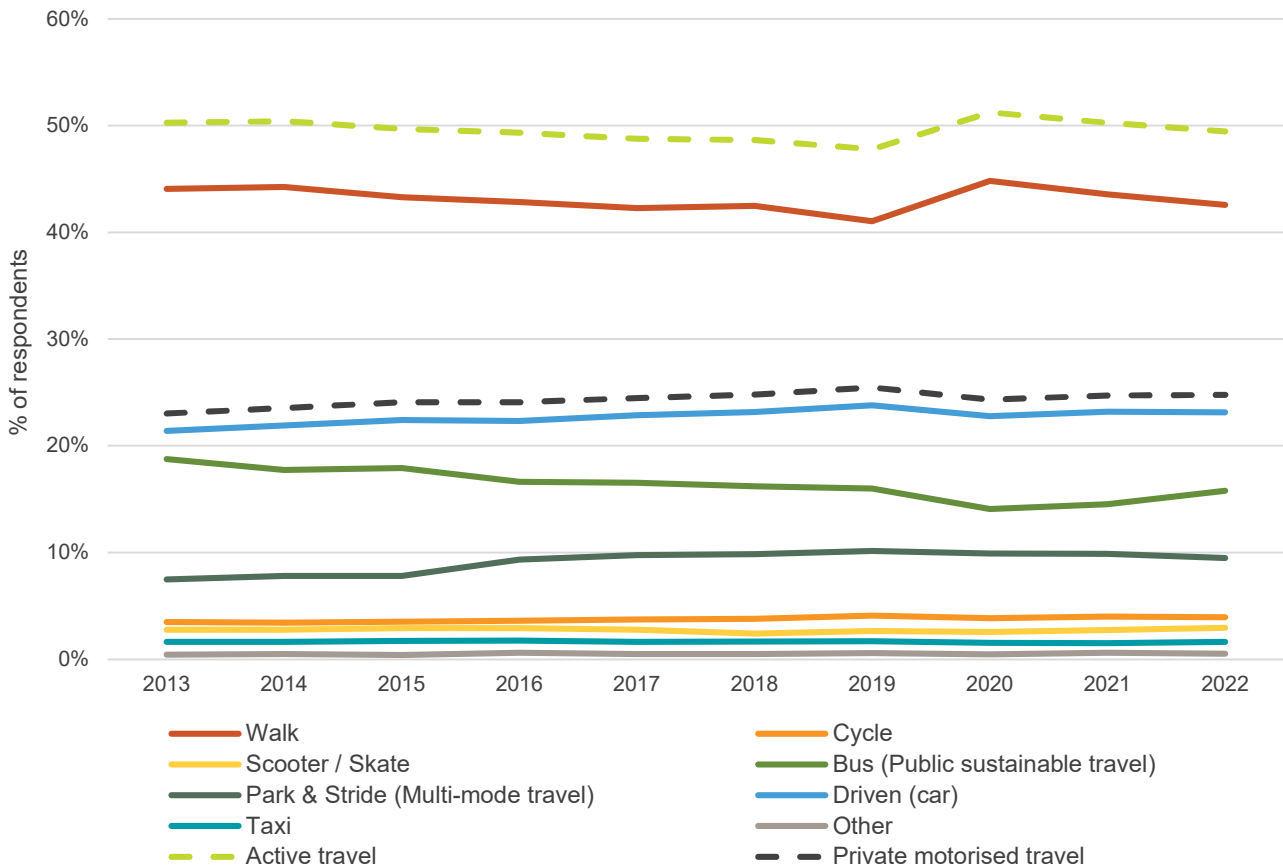
9.5% of school pupils (43,367) said they normally park and stride to school.

Private motorised travel

24.8% of school pupils (113,114) said they normally travel to school using private motorised transport.

Trends in the 2013-2022 results – All schools

Chart 2: National travel modes and categories: all schools (exc. nursery), 2013-2022²



- Since 2013, active travel to school has remained the most frequently reported mode of travel to school in Scotland
- In 2013, 50.3% of pupils in all schools (exc. nursery) reported travelling actively to school. This percentage has fluctuated, peaking at 51.2% in 2020. Active travel to school has since decreased. Between 2021 and 2022 it decreased by 0.9pp from 50.3% to 49.4%, though remains higher than the pre-pandemic levels of 2019 (47.8%)
- Levels of pupils in all schools (exc. nursery) travelling to school using private motorised transport have increased from 23.0% in 2013 to 24.8% in 2022, up 0.1pp since 2021 (24.7%)
- Overall, the proportion of pupils travelling to school (exc. nursery) by bus has declined over the past ten survey years, from 18.8% in 2013 to 15.8% in 2022. However, bus use increased in 2022 for the second year in a row, increasing by 1.3% from 14.5% in 2021
- The proportion of pupils travelling to school by park and stride has shown an overall upward trend over the past ten survey years from 7.5% in 2013 to 9.5% in 2022. However, levels have decreased by 0.4pp since 2021 and are 0.7pp lower than the high recorded in 2019 (10.2%).

Response rates

- A total of 1,973 schools took part in the 2022 survey. This represents 94 more schools than in 2021
- State school responses as a proportion of all state schools in Scotland increased from 78.7% in 2013 to 81.1% in 2015. From 2016 to 2021 levels fluctuated between 70.9% and 79.1%.³ In 2022, the state school response rate increased for the second consecutive year, from 75.3% in 2021 to 79.3%, and was the third highest level over the last ten survey years
- Responses were received from 456,695 school pupils in 2022. This represents 38,548 more school pupils than in 2021
- 449,376 state school pupils took part in the 2022 survey, which equates to 63.7% of all state school pupils enrolled in Scotland. The number and proportion of state school pupils responding to the survey has fluctuated year by year, decreasing from 461,707 (67.7%) in 2013 to 449,376 (63.7%) in 2022, with a high of 480,155 (70.9%) in 2014.

Key results tables

Table 1: National travel modes: by school type, 2022.⁴

School type	Walk	Cycle	Scooter/ Skate	Bus	Park & Stride	Driven (car)	Taxi	Other	Total
Nursery	35.6%	3.9%	3.5%	2.8%	3.9%	48.8%	1.0%	0.5%	40,945
Primary	44.2%	5.4%	4.5%	6.1%	11.8%	26.5%	1.4%	0.2%	289,138
Secondary	41.4%	1.3%	0.2%	33.0%	5.3%	16.4%	1.4%	1.0%	157,872
SEN	2.9%	*	*	26.5%	0.2%	14.5%	50.5%	5.2%	2,366
Independent	17.9%	1.3%	0.8%	23.7%	13.3%	40.4%	0.3%	2.3%	7,319
All state schools (exc. nursery)	43.0%	4.0%	3.0%	15.7%	9.4%	22.8%	1.7%	0.5%	449,376
All schools (exc. nursery)	42.6%	3.9%	2.9%	15.8%	9.5%	23.1%	1.6%	0.5%	456,695

Table 2: National travel modes: all schools (exc. nursery), 2013-2022.⁵

Year	Walk	Cycle	Scooter /Skate	Bus	Park & Stride	Driven (car)	Taxi	Other	Total
2013	44.1%	3.5%	2.8%	18.8%	7.5%	21.4%	1.6%	0.4%	467,397
2014	44.2%	3.4%	2.8%	17.7%	7.8%	21.9%	1.6%	0.5%	487,147
2015	43.3%	3.5%	2.9%	17.9%	7.8%	22.4%	1.7%	0.4%	480,161
2016	42.8%	3.6%	2.9%	16.6%	9.3%	22.3%	1.8%	0.6%	458,145
2017	42.3%	3.7%	2.8%	16.5%	9.7%	22.8%	1.6%	0.5%	473,160
2018	42.5%	3.8%	2.4%	16.2%	9.8%	23.1%	1.7%	0.5%	468,537
2019	41.0%	4.1%	2.7%	16.0%	10.2%	23.8%	1.7%	0.6%	472,617
2020	44.8%	3.8%	2.6%	14.1%	9.9%	22.8%	1.5%	0.4%	405,917
2021	43.6%	4.0%	2.7%	14.5%	9.9%	23.2%	1.5%	0.6%	418,147
2022	42.6%	3.9%	2.9%	15.8%	9.5%	23.1%	1.6%	0.5%	456,695

Endnotes

¹ Table 2.1 in supplementary National Results Excel file available to download from:

<http://www.sustrans.org.uk/scotland/hands-up-scotland-survey>

² Active travel is the combination of Walk, Cycle and Scooter / Skate. Private motorised travel is the combination of Driven (car) and Taxi.

³ All state schools: primary, secondary and SEN schools in Scotland, excluding nursery.

⁴ Table 2.3 in supplementary National Results Excel file available to download from:

<http://www.sustrans.org.uk/scotland/hands-up-scotland-survey>

⁵ Table 2.3 in supplementary National Results Excel file available to download from:

<http://www.sustrans.org.uk/scotland/hands-up-scotland-survey>