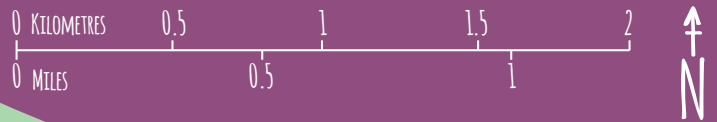


# STAGE 1: ROUNDHAY PARK TO TEMPLE NEWSAM (THE WYKEBECK WAY)



## TAKE A BREAK!

- Lakeside Café at Roundhay Park
- Cafés at Killingbeck retail park
- Café and ice cream shop at Temple Newsam



## ENJOY THE SLOW TOUR ON THE NATIONAL CYCLE NETWORK!

The Slow Tour of Yorkshire is inspired by the Grand Depart of the Tour de France in Yorkshire in 2014. Funded by the Public Health Team in Leeds City Council, the Slow Tour aims to increase accessible cycling opportunities across the region on Sustrans' National Cycle Network. The Network is more than 14,000 miles of traffic-free paths, quiet lanes and on-road walking and cycling routes across the UK.

**This route is part of National Route 677, so just follow the signs!**

## KEY

- Slow Tour route On-road / Traffic-free
- National Cycle Network On-road / Traffic-free
- Other cycle routes
- National Cycle Network route number
- Café / Toilets
- Play area / Shop
- Railway
- Access point
- Take care here
- Picnic spot
- Historic attraction
- Sustrans Portrait Bench

## THINGS TO SEE AND DO

### Roundhay Park

700 acres of parkland, lakes, woodland and activity areas, including Tennis courts, bowling greens, sports pitches, skateboard ramps, children's play areas, fishing, a golf course and a café.  
[www.roundhaypark.org.uk](http://www.roundhaypark.org.uk)

### Tropical World at Roundhay Park

Enjoy tropical birds, butterflies, iguanas, monkeys and fruit bats in the rainforest environment of Tropical World.

### Sculptures

Check out the Sustrans Portrait Bench just after Roundhay Park dedicated to local cycling heroes!

### Temple Newsam

A Tudor-Jacobean mansion with over 40 restored rooms available to view and 1500 acres of parkland, woodland and farmland. And Europe's largest working rare breeds farm and a café!  
[www.leeds.gov.uk/templenewsam](http://www.leeds.gov.uk/templenewsam)

## TAKE CARE!

- 1 Share the path. Please give way to pedestrians and wheelchair users.
- 2,3,4 Take care at signal controlled crossings across some busy roads.
- 5 Take care and look out for golf balls as you cross the golf course.

## MAKING IT EASIER FOR YOU

This route is not suitable for bikes wider than 1m. Please try one of our other routes at [www.sustrans.org.uk/slowtourofyrkshire](http://www.sustrans.org.uk/slowtourofyrkshire)

Note that some sections of the route in the grounds of Temple Newsam have a rough surface that road bikes may find difficult.



## BIKE HERE

Get Cycling can arrange bike hire for groups. Bike can be delivered to the start of the route.  
[www.getcycling.org.uk](http://www.getcycling.org.uk)



# ROUNDHAY PARK TO TEMPLE NEWSAM (THE WYKEBECK WAY)

Return 12 miles,  
about 1.5 hours

This great route explores the little known Wykebeck Valley in Leeds, using cycle tracks, parkland paths and quiet roads to connect two of Leeds' finest attractions, Roundhay Park and Temple Newsam.

- Start your journey in the fantastic 700 acre Roundhay Park, a haven for wildlife and residents alike. Explore lakes, woodland, formal gardens, playgrounds, sports pitches, a golf course, a lakeside café and Tropical World - home to iguanas, monkeys and fruit bats!
- From Tropical World, follow signs for Temple Newsam ("TN") down The Carriage Drive. The route winds through the ancient woodland of Wykebeck woods and the meadows of Killingbeck Fields. Pause to look for Red Kites soaring overhead and to enjoy the Sustrans Portrait Bench.
- Enjoy a break at Killingbeck retail park where there is also an Asda and a café.
- Continue through the green spaces of Primrose Valley Park and Halton Moor with great views overlooking the Aire Valley. Cross the golf course to arrive at one of England's great historic estates - Temple Newsam. This historic mansion is set in 1500 acres of parkland, woodland and farmland, including Europe's largest working Rare Breeds Farm, home to over 400 animals. Enjoy the beautiful area and its café.
- Retrace your steps back to Roundhay Park following the signs "RP".



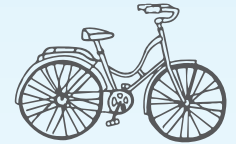
CYCLING PARKLAND PATHS

## OVERVIEW MAP



## Roundhay Park to Temple Newsam (The Wykebeck Way)

# SLOW TOUR



# OF YORKSHIRE

ON THE NATIONAL CYCLE NETWORK



ENJOY A GREAT  
CYCLING DAY OUT...  
AT YOUR OWN PACE!

**The Slow Tour is a guide to 21 of the best cycle routes across Yorkshire on the National Cycle Network.**

The routes have something for everyone, whether you are a family, new to cycling or a regular cyclist. You can take public transport to the start of most routes and hire bikes there too.

**Tourist attractions ● heritage sites  
cafés and pubs ● picnic spots ● canals  
museums ● playgrounds ● artwork  
and more!**

**If you like this route, try out the other 20!**

Download your free maps at  
[WWW.SUSTRANS.ORG.UK/SLOWTOUROFYORKSHIRE](http://WWW.SUSTRANS.ORG.UK/SLOWTOUROFYORKSHIRE)



**Roundhay Park to Temple Newsam is part of  
The Wykebeck Way**



Photography: Cover Roundhay Park  
Registered charity number 326550 (England and Wales) SCO39263 (Scotland)



STAGE 1